



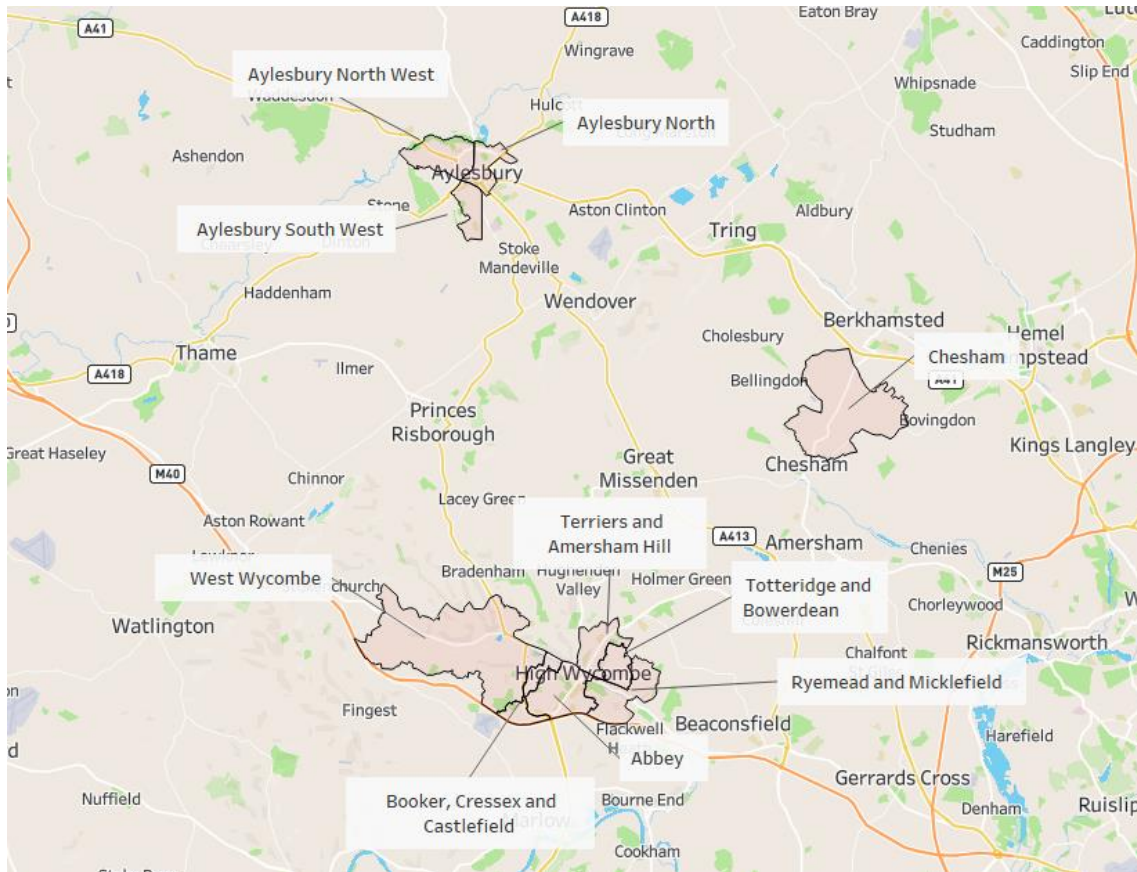
LEP Economic Profiles Summary

September 2023



Buckinghamshire LEP have produced a set of **economic profiles for the 10 wards** of Buckinghamshire where people are experiencing the most hardship to inform the work of the [Opportunity Bucks programme](#).

A map to show the 10 Opportunity Bucks Wards



Each ward profile provided:



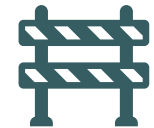
Overview of the Local Economy

including key businesses, employment hotspots, high-growth firms and key employment sites



Profile of Residents

including demographics and labour market status



Potential Barriers to Employment

including health, transport, caring responsibilities, English Language Proficiency, qualifications, and childcare

Overall, the analysis showed that the 10 wards selected in 2021 as being priorities for the Opportunity Bucks programme remain a priority, from a labour market participation perspective, in 2023.

In comparison to the County average, residents in Opportunity Bucks wards are...

More likely to be:

Younger and of working age

Asian, Black or mixed ethnicity

Unemployed

Claiming un-employment-related benefits

Long-term unemployed or never to have worked

Economically inactive due to being long-term sick

Economically inactive due to looking after home & family

Work in Health and Retail Sectors

Work in Routine Occupations

Live close to where they work (except Chesham)

Not in good health

Not speak English well or at all

Less likely to be

Self-employed (except Chesham and Booker, Cressex & Castlefield wards)

Work from Home

Have access to a car or van

Be providing unpaid care (except Chesham, Aylesbury NW and SW wards)

Highly educated (except Chesham, Terriers & Amersham Hill and some in Abbey)

OPPORTUNITY BUCKS – SUCCEEDING FOR ALL

A local response to Levelling Up



Health



Not well educated



Well educated



Looking after home/family



Provision of under 5's childcare



Employment provision



Female claimants



Male claimants



Minority ethnic diverse

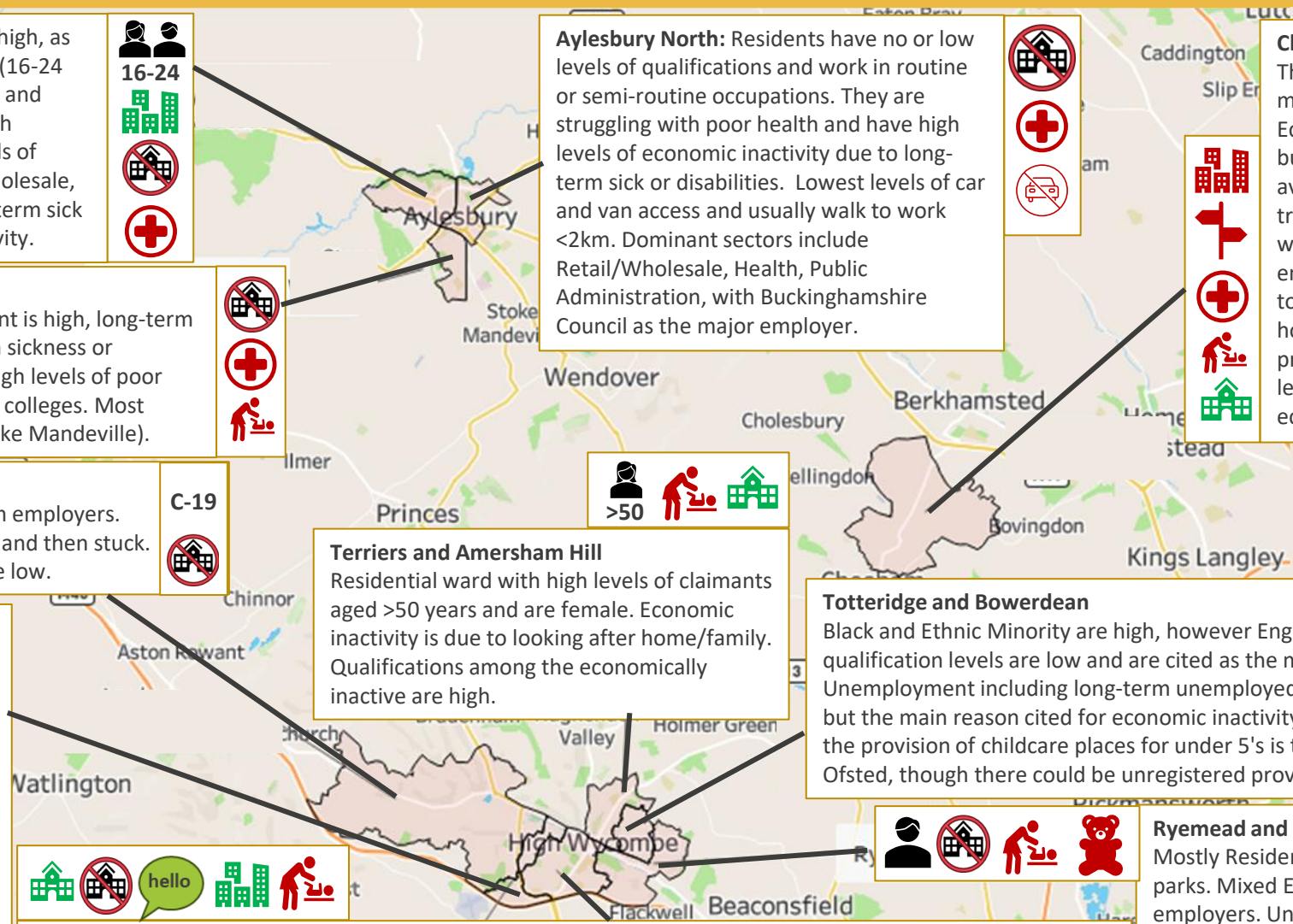


Distance 2 work



Access 2 car/van

Ward Profiles



Aylesbury North-West: Unemployment rates are high, as are claimant levels who are predominantly young (16-24 yrs). There is a very strong presence of companies and employment sites including those with high growth potential. However, residents have no or low levels of qualifications. Residents mainly work in Retail/Wholesale, Health, Public Administration. High levels of long-term sick are associated with high levels of economic inactivity.

16-24

Aylesbury North: Residents have no or low levels of qualifications and work in routine or semi-routine occupations. They are struggling with poor health and have high levels of economic inactivity due to long-term sick or disabilities. Lowest levels of car and van access and usually walk to work <2km. Dominant sectors include Retail/Wholesale, Health, Public Administration, with Buckinghamshire Council as the major employer.

Chesham
 This is a rural ward without any major employers. Claimant Rate and Economic Inactivity is more average but worse than the Buckinghamshire average. Residents who work have to travel far (10-20km) and tend to work in education or are self-employed. Economic Inactivity is due to long-term sick or looking after home/family. 1 in 10 residents provide unpaid care. Qualification levels are high among the economically inactive.

Aylesbury South-West
 Levels of qualifications are very low, unemployment is high, long-term economic inactivity is high and linked to long-term sickness or disability and looking after home or family. Very high levels of poor health. Mainly a residential ward with schools and colleges. Most working residents work in Health (proximity to Stoke Mandeville).

Terriers and Amersham Hill
 Residential ward with high levels of claimants aged >50 years and are female. Economic inactivity is due to looking after home/family. Qualifications among the economically inactive are high.

>50

West Wycombe
 This is a rural ward with a mix of small and medium employers. Unemployment claimants peaked during Covid-19 and then stuck. Qualifications among the economically inactive are low.

C-19

Totteridge and Bowerdean
 Black and Ethnic Minority are high, however English levels are reasonable, but qualification levels are low and are cited as the main reason for economic inactivity. Unemployment including long-term unemployed is very high. Health levels are poor, but the main reason cited for economic inactivity is looking after home/family, and the provision of childcare places for under 5's is the lowest in this ward based on Ofsted, though there could be unregistered provision.

Booker, Cressex, and Castlefield
 Despite the strong employment market and companies in this ward, this is the ward with the most complex challenges. There is a high proportion of Black and Ethnic Minorities, which is coupled with poor English-speaking Skills and the lowest levels of qualifications of any ward. Claimant Levels, Unemployment including economically inactive and long-term unemployed are all the highest of any ward. Residents are also not in good health, though the reason cited for economic inactivity is looking after home/family which is coupled with low levels of places for under 5's.

Abbey
 This is a polarised ward with both low and high levels of qualifications and residents working in both high professional and elementary roles. English-speaking skills are poor. Unemployment rates are very high despite one of the strongest employment profiles with a high number of activity companies, employment sites and companies with high growth potential. Reasons for economic inactivity are due to looking after home/family.

Ryemead and Micklefield
 Mostly Residential with some retail and business parks. Mixed Economy with few medium to large employers. Unemployment and Claimant Rates are moderately high and are made up mostly of men with low qualifications. Working residents travel 2-5km to work. Economic inactivity is attributed to looking after home/family. Provision for under 5's childcare spaces is very low.